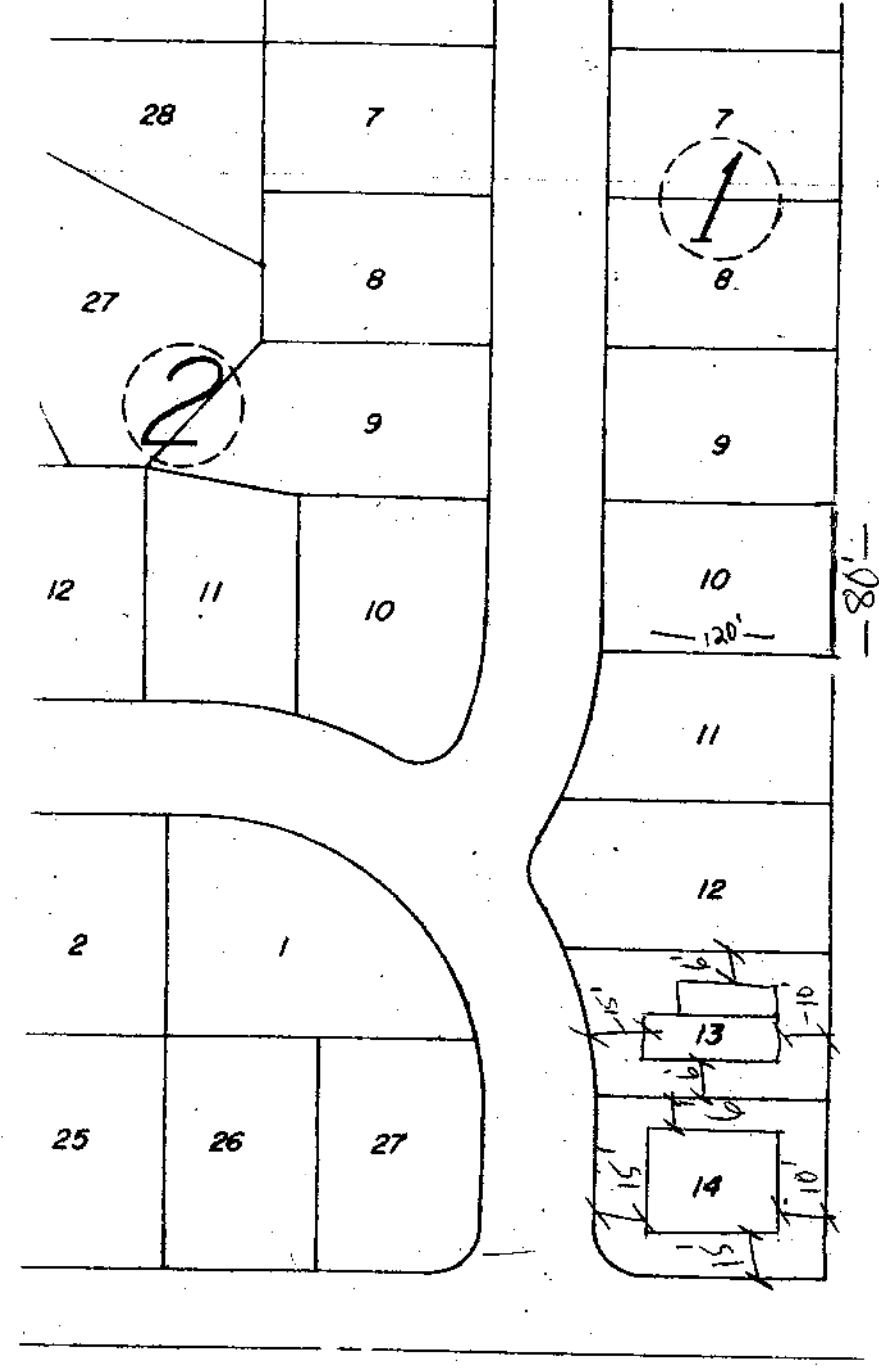


DATA BOX

PARK NAME	SLEEPY HOLLOW
AKA	
PARK ADDRESS	4704 Palm Beach Canal Rd, West Palm Beach, FL 33411
USE	RESIDENTIAL
PC #	1
ZONING	RS-1
SUBDIVISION #	10000000
INSPECTION AREA #	10000000
DATE OF APPROVAL	10/20/20
IMPACT FEE ZONES	10000000
PETITION #	10000000
ZONING ORD #	10000000
NUMBER OF SPACES APPROVED	10000000
ORDINANCE APPROVED UNDER	10000000
RESOLUTION	10000000
STATUS OF PROJECT	10000000
SETBACKS	10000000

DISCLAIMER--
 INFORMATIONAL PURPOSES ONLY. This plan is not to be construed as a contract. The information included in this data box and on the site plan is based solely upon information previously submitted by the applicant.

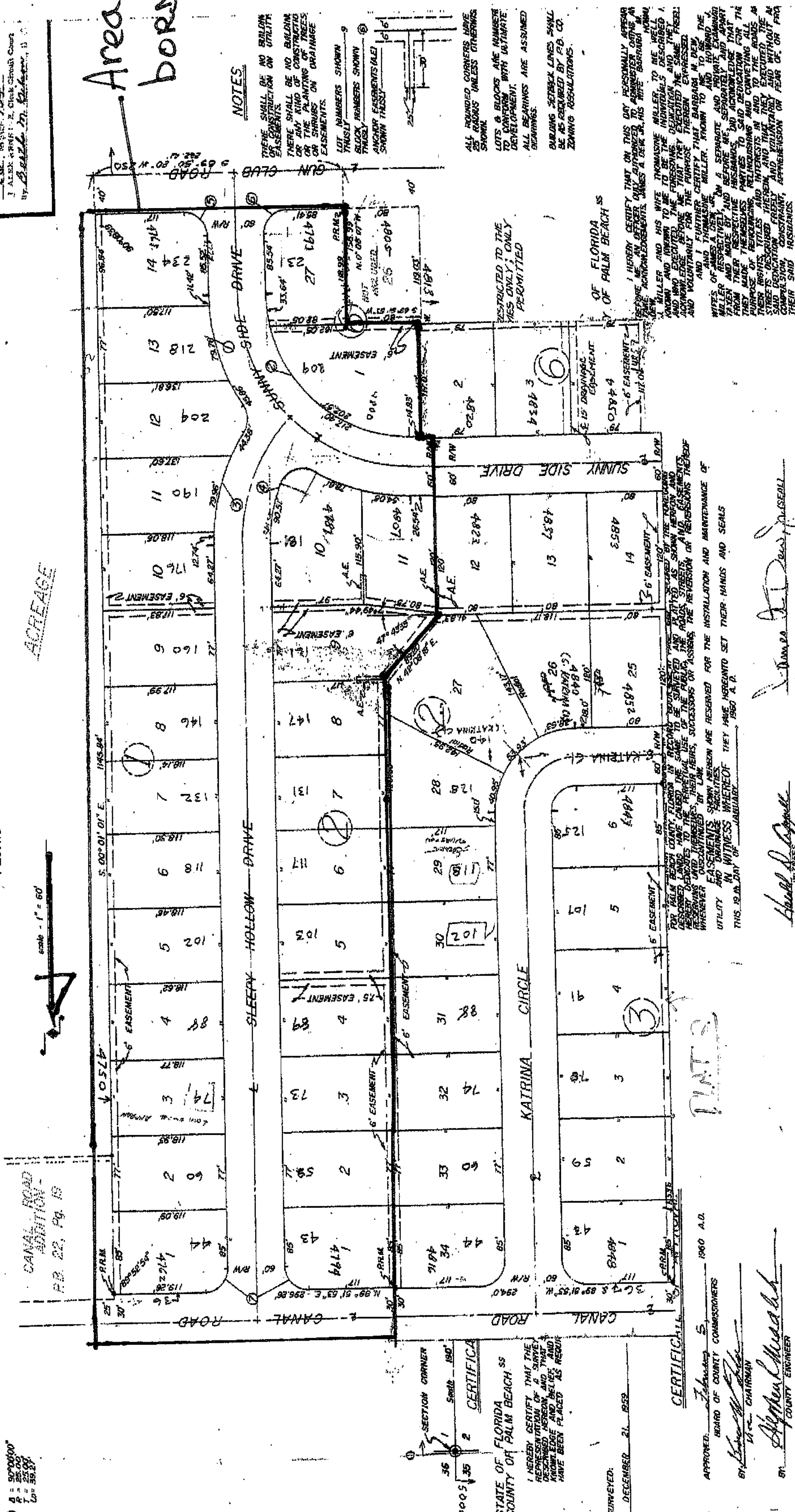


SLEEPY HOLLOW

PLAT NO. 1

A SUBDIVISION OF A PART OF THE N.W. 1/4 OF THE N.W. 1/4 OF SECTION 1, TOWNSHIP 44 SOUTH, RANGE 42 EAST, BEING A REPLAT OF A PORTION BEACH LOT 5, BLOCK 2, SECTION 1, OF PALM BEACH PLANTATIONS PLAT 10, PLAT BOOK 10, PAGE 20, PALM BEACH COUNTY, FLORIDA.

- CURVE NOTES**
- 1. 30' RADIUS
 - 2. 45' RADIUS
 - 3. 60' RADIUS
 - 4. 75' RADIUS
 - 5. 90' RADIUS
 - 6. 105' RADIUS
 - 7. 120' RADIUS
 - 8. 135' RADIUS
 - 9. 150' RADIUS
 - 10. 165' RADIUS
 - 11. 180' RADIUS
 - 12. 195' RADIUS
 - 13. 210' RADIUS
 - 14. 225' RADIUS
 - 15. 240' RADIUS
 - 16. 255' RADIUS
 - 17. 270' RADIUS
 - 18. 285' RADIUS
 - 19. 300' RADIUS
 - 20. 315' RADIUS
 - 21. 330' RADIUS
 - 22. 345' RADIUS
 - 23. 360' RADIUS
 - 24. 375' RADIUS
 - 25. 390' RADIUS
 - 26. 405' RADIUS
 - 27. 420' RADIUS
 - 28. 435' RADIUS
 - 29. 450' RADIUS
 - 30. 465' RADIUS
 - 31. 480' RADIUS
 - 32. 495' RADIUS
 - 33. 510' RADIUS
 - 34. 525' RADIUS
 - 35. 540' RADIUS
 - 36. 555' RADIUS
 - 37. 570' RADIUS
 - 38. 585' RADIUS
 - 39. 600' RADIUS
 - 40. 615' RADIUS
 - 41. 630' RADIUS
 - 42. 645' RADIUS
 - 43. 660' RADIUS
 - 44. 675' RADIUS
 - 45. 690' RADIUS
 - 46. 705' RADIUS
 - 47. 720' RADIUS
 - 48. 735' RADIUS
 - 49. 750' RADIUS
 - 50. 765' RADIUS
 - 51. 780' RADIUS
 - 52. 795' RADIUS
 - 53. 810' RADIUS
 - 54. 825' RADIUS
 - 55. 840' RADIUS
 - 56. 855' RADIUS
 - 57. 870' RADIUS
 - 58. 885' RADIUS
 - 59. 900' RADIUS
 - 60. 915' RADIUS
 - 61. 930' RADIUS
 - 62. 945' RADIUS
 - 63. 960' RADIUS
 - 64. 975' RADIUS
 - 65. 990' RADIUS
 - 66. 1005' RADIUS
 - 67. 1020' RADIUS
 - 68. 1035' RADIUS
 - 69. 1050' RADIUS
 - 70. 1065' RADIUS
 - 71. 1080' RADIUS
 - 72. 1095' RADIUS
 - 73. 1110' RADIUS
 - 74. 1125' RADIUS
 - 75. 1140' RADIUS
 - 76. 1155' RADIUS
 - 77. 1170' RADIUS
 - 78. 1185' RADIUS
 - 79. 1200' RADIUS
 - 80. 1215' RADIUS
 - 81. 1230' RADIUS
 - 82. 1245' RADIUS
 - 83. 1260' RADIUS
 - 84. 1275' RADIUS
 - 85. 1290' RADIUS
 - 86. 1305' RADIUS
 - 87. 1320' RADIUS
 - 88. 1335' RADIUS
 - 89. 1350' RADIUS
 - 90. 1365' RADIUS
 - 91. 1380' RADIUS
 - 92. 1395' RADIUS
 - 93. 1410' RADIUS
 - 94. 1425' RADIUS
 - 95. 1440' RADIUS
 - 96. 1455' RADIUS
 - 97. 1470' RADIUS
 - 98. 1485' RADIUS
 - 99. 1500' RADIUS
 - 100. 1515' RADIUS
 - 101. 1530' RADIUS
 - 102. 1545' RADIUS
 - 103. 1560' RADIUS
 - 104. 1575' RADIUS
 - 105. 1590' RADIUS
 - 106. 1605' RADIUS
 - 107. 1620' RADIUS
 - 108. 1635' RADIUS
 - 109. 1650' RADIUS
 - 110. 1665' RADIUS
 - 111. 1680' RADIUS
 - 112. 1695' RADIUS
 - 113. 1710' RADIUS
 - 114. 1725' RADIUS
 - 115. 1740' RADIUS
 - 116. 1755' RADIUS
 - 117. 1770' RADIUS
 - 118. 1785' RADIUS
 - 119. 1800' RADIUS
 - 120. 1815' RADIUS
 - 121. 1830' RADIUS
 - 122. 1845' RADIUS
 - 123. 1860' RADIUS
 - 124. 1875' RADIUS
 - 125. 1890' RADIUS
 - 126. 1905' RADIUS
 - 127. 1920' RADIUS
 - 128. 1935' RADIUS
 - 129. 1950' RADIUS
 - 130. 1965' RADIUS
 - 131. 1980' RADIUS
 - 132. 1995' RADIUS
 - 133. 2010' RADIUS
 - 134. 2025' RADIUS
 - 135. 2040' RADIUS
 - 136. 2055' RADIUS
 - 137. 2070' RADIUS
 - 138. 2085' RADIUS
 - 139. 2100' RADIUS
 - 140. 2115' RADIUS
 - 141. 2130' RADIUS
 - 142. 2145' RADIUS
 - 143. 2160' RADIUS
 - 144. 2175' RADIUS
 - 145. 2190' RADIUS
 - 146. 2205' RADIUS
 - 147. 2220' RADIUS
 - 148. 2235' RADIUS
 - 149. 2250' RADIUS
 - 150. 2265' RADIUS
 - 151. 2280' RADIUS
 - 152. 2295' RADIUS
 - 153. 2310' RADIUS
 - 154. 2325' RADIUS
 - 155. 2340' RADIUS
 - 156. 2355' RADIUS
 - 157. 2370' RADIUS
 - 158. 2385' RADIUS
 - 159. 2400' RADIUS
 - 160. 2415' RADIUS
 - 161. 2430' RADIUS
 - 162. 2445' RADIUS
 - 163. 2460' RADIUS
 - 164. 2475' RADIUS
 - 165. 2490' RADIUS
 - 166. 2505' RADIUS
 - 167. 2520' RADIUS
 - 168. 2535' RADIUS
 - 169. 2550' RADIUS
 - 170. 2565' RADIUS
 - 171. 2580' RADIUS
 - 172. 2595' RADIUS
 - 173. 2610' RADIUS
 - 174. 2625' RADIUS
 - 175. 2640' RADIUS
 - 176. 2655' RADIUS
 - 177. 2670' RADIUS
 - 178. 2685' RADIUS
 - 179. 2700' RADIUS
 - 180. 2715' RADIUS
 - 181. 2730' RADIUS
 - 182. 2745' RADIUS
 - 183. 2760' RADIUS
 - 184. 2775' RADIUS
 - 185. 2790' RADIUS
 - 186. 2805' RADIUS
 - 187. 2820' RADIUS
 - 188. 2835' RADIUS
 - 189. 2850' RADIUS
 - 190. 2865' RADIUS
 - 191. 2880' RADIUS
 - 192. 2895' RADIUS
 - 193. 2910' RADIUS
 - 194. 2925' RADIUS
 - 195. 2940' RADIUS
 - 196. 2955' RADIUS
 - 197. 2970' RADIUS
 - 198. 2985' RADIUS
 - 199. 3000' RADIUS



CERTIFICATE OF CLERK OF CIRCUIT COURT
 STATE OF FLORIDA
 COUNTY OF PALM BEACH
 I, *[Signature]*, Clerk of Circuit Court, do hereby certify that the foregoing plat of subdivision of land in Palm Beach County, Florida, as shown on the attached plat, has been duly recorded in the public records of said county in accordance with the laws of Florida.
 DECEMBER 21, 2020
 CLERK OF CIRCUIT COURT
 PALM BEACH COUNTY

[Signature]
 BONNIE M. DREW
 (26-134)

4000-085
 1-44-42

STATE OF FLORIDA
 COUNTY OF PALM BEACH
 I, *[Signature]*, Clerk of Circuit Court, do hereby certify that the foregoing plat of subdivision of land in Palm Beach County, Florida, as shown on the attached plat, has been duly recorded in the public records of said county in accordance with the laws of Florida.
 DECEMBER 21, 2020
 CLERK OF CIRCUIT COURT
 PALM BEACH COUNTY



[Signature]
 BONNIE M. DREW

1-44-42

134
 PLAT NO. 1
 A SUBDIVISION OF A PART OF THE N.W. 1/4 OF THE N.W. 1/4 OF SECTION 1, TOWNSHIP 44 SOUTH, RANGE 42 EAST, BEING A REPLAT OF A PORTION BEACH LOT 5, BLOCK 2, SECTION 1, OF PALM BEACH PLANTATIONS PLAT 10, PLAT BOOK 10, PAGE 20, PALM BEACH COUNTY, FLORIDA.

Area in Black border is Plat 1